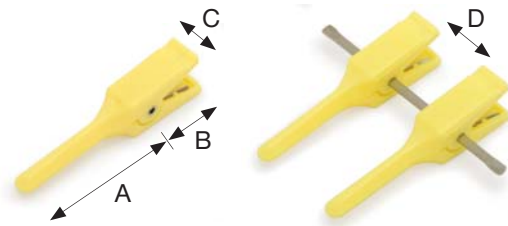


DISPOSABLE MICRO ARTERY CLAMPS



The Biover® microvascular clamp is a high precision instrument and has been developed under the guidance of international surgeons.

- Highest quality (Polycarbonate & Stainless Steel)
- Single or double clamps sterile, ready for use
- Three sizes available for arteries
- Latex Free and Radiolucent
- Exact pressure every use
- Single or double clamps supplied in packs of 10
- Each box easily identified by a different colour




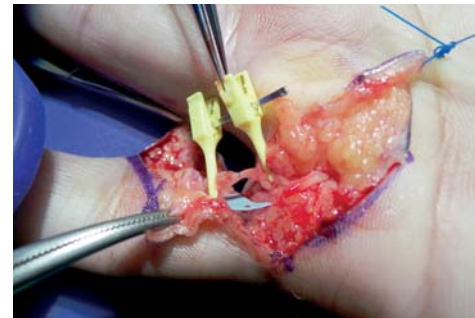
ARTERIAL CLAMPS

Single Artery Clamps Double Approximating Clamps

<p>TKS-1</p> <p>Pressure 40g/mm²</p> 	<p>TKS-2</p> <p>Pressure 40g/mm²</p> 
For vessels less than 1mm Ø	

<p>TKM-1</p> <p>Pressure 60g/mm²</p> 	<p>TKM-2</p> <p>Pressure 60g/mm²</p> 
For vessels between 1mm to 2mm Ø	

<p>TKL-1</p> <p>Pressure 120g/mm²</p> 	<p>TKL-2</p> <p>Pressure 120g/mm²</p> 
For vessels between 2mm to 4mm Ø	

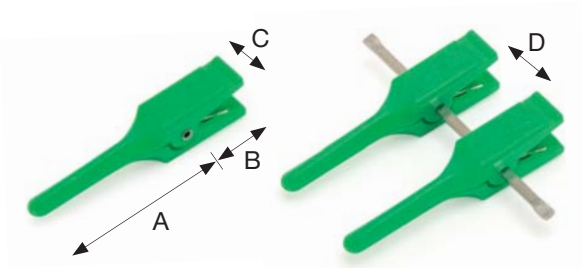


ARTERIES	Code	A	B	C	D	Clipping Pressure
	TKS-1	10.0mm	4.5mm	2.5mm	-	40g/mm ²
TKS-2	10.0mm	4.5mm	2.5mm	7.5mm	40g/mm ²	
TKM-1	11.5mm	5.5mm	3.0mm	-	60g/mm ²	
TKM-2	11.5mm	5.5mm	3.0mm	12.5mm	60g/mm ²	
TKL-1	15.0mm	6.5mm	3.5mm	-	120g/mm ²	
TKL-2	15.0mm	6.5mm	3.5mm	15.0mm	120g/mm ²	

DISPOSABLE MICRO VEIN CLAMPS



The Biover® microvascular clamp is a high precision instrument and has been developed under the guidance of international surgeons.

- Highest quality (Polycarbonate & Stainless Steel)
- Single or double clamps sterile, ready for use
- Four sizes available for veins
- Latex Free and Radiolucent
- Exact pressure every use
- Single or double clamps supplied in packs of 10
- Each box easily identified by a different colour



VEIN CLAMPS

Single Vein Clamps Double Approximating Clamps

<p>TKFV-1</p>  <p>Pressure 15g/mm²</p>	<p>TKFV-2</p>  <p>Pressure 15g/mm²</p>
---	---

For vessels between 0.2mm to 1mm Ø

<p>TKSV-1</p>  <p>Pressure 20g/mm²</p>	<p>TKSV-2</p>  <p>Pressure 20g/mm²</p>
--	--

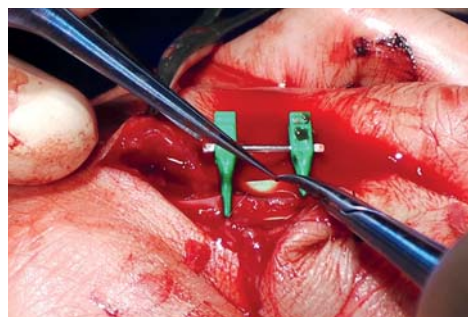
For vessels less than 1mm Ø

<p>TKMV-1</p>  <p>Pressure 30g/mm²</p>	<p>TKMV-2</p>  <p>Pressure 30g/mm²</p>
---	---

For vessels between 1mm to 2mm Ø

<p>TKLV-1</p>  <p>Pressure 40g/mm²</p>	<p>TKLV-2</p>  <p>Pressure 40g/mm²</p>
---	---

For vessels over 2mm Ø



VEINS

Code	A	B	C	D	Clipping Pressure
TKFV-1	7.0mm	4.0mm	2.3mm	-	15g/mm ²
TKFV-2	7.0mm	4.0mm	2.3mm	8.0mm	15g/mm ²
TKSV-1	10.0mm	4.5mm	2.5mm	-	20g/mm ²
TKSV-2	10.0mm	4.5mm	2.5mm	7.5mm	20g/mm ²
TKMV-1	11.5mm	5.5mm	3.0mm	-	30g/mm ²
TKMV-2	11.5mm	5.5mm	3.0mm	12.5mm	30g/mm ²
TKLV-1	15.0mm	6.5mm	3.5mm	-	40g/mm ²
TKLV-2	15.0mm	6.5mm	3.5mm	15.0mm	40g/mm ²